

TROMBONE 3

RHYTHM CHANGES IN B \flat

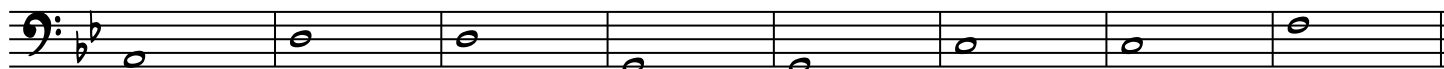
A B \flat MAJ⁷ G⁷ CMIN⁷ F⁷ DMIN⁷ G⁷ CMIN⁷ F⁷ FMIN⁷ B \flat ⁷ E \flat MAJ⁷ A \flat ⁷ DMIN⁷ G⁷ CMIN⁷ F⁷



B \flat MAJ⁷ G⁷ CMIN⁷ F⁷ DMIN⁷ G⁷ CMIN⁷ F⁷ FMIN⁷ B \flat ⁷ EMAJ⁷ A \flat ⁷ CMIN⁷ F⁷ B \flat MAJ⁷



⁹
B A \flat MIN⁷ D⁷ DMIN G⁷ GMIN⁷ C⁷ CMIN F⁷



¹⁷
A B \flat MAJ⁷ G⁷ CMIN⁷ F⁷ DMIN⁷ G⁷ CMIN⁷ F⁷ FMIN⁷ B \flat ⁷ E \flat MAJ⁷ A \flat ⁷ CMIN⁷ F⁷ B \flat MAJ⁷ F⁷



25